

**KNORR-BREMSE**

ECUtalk V.3.3.1.10

EOL PROTOCOL REPORT

| | | | | | | | | | | |
|---------------------------------------|-------------------------------|----------------------------------|--------------------------------|-------------------------------------|--------------------------------|---------------------------------|--------|-------------|---------------------------|---------------------|
| SYSTEM | | Trailer EBS | | MATCH CODE | | ES 2053 | | | | |
| PRODUCTION DATE | | week 49 in 2007 | | SERIAL NUMBER | | 224 | | | | |
| PART NUMBER | | II 39782 | | VIN | | 7ASJW0T0298049677 | | | | |
| MANUFACTURER | | Domett Trailers | | BRAKE CALCULATION NO. | | 7ASJW0T0298049677 | | | | |
| TYPE | | Full trailer | | FORMER PIN ACTUAL PIN | | 30 32 4D 52 30 32 4D 52 | | | | |
| DIFFERENTIAL SLIP [%] | AUX1 | OFF | IN A | Disabled | | SOFTWARE VERSION | 521.17 | AXLE | BRAKE CHAMBER SIZE | LEVER LENGTH |
| | AUX2 | OFF | IN B | Disabled | | ISS INVERTED | - | 1 | 16 | - |
| | AUX3 | OFF | IN C | Disabled | | RSP | St 2 | 2 | 16 | - |
| | AUX4 | ON | IN D | - | | ABS CONFIGURATION | 4S/3M | 3 | 1024 | - |
| | AUX5 | - | POLE WHEEL TEETH SR, SL | | 90 | DYN.TYRE DIAMETER [MM] | 640 | 4 | 1024 | - |
| | -0.2 | POLE WHEEL TEETH SAR, SAL | | 90 | COMPENSATION AT 1.6 BAR | | | 5 | - | - |
| REAR AXLE PRESSURE LIMIT [BAR] | | 4.5 | CONTROLL PRESSURE [BAR] | | 6.5 | CONTROLL PRESSURE [BAR] | | 0.7 | 1.6 | 6.5 |
| AXLE | AXLE LOAD UNLADEN [KG] | SUSP.PRESS.UNL. [BAR] | BRAKE PRESS.UNL. [BAR] | AXLE LOAD LADEN [KG] | SUSP.PRESS.LADEN [BAR] | BRAKE PRESS.LADEN [BAR] | | | | |
| 1 | 2024 | 0 | - | 6500 | 0 | - | - | - | - | |
| 2 | 2024 | 0 | - | 6500 | 0 | - | - | - | - | |
| 3 | 1335 | 0.6 | 1.4 | 6500 | 4.5 | 0.56 | 1.4 | 4.6 | 4.6 | |
| 4 | 1335 | 0.6 | 1.4 | 6500 | 4.5 | 0.56 | 1.4 | 4.6 | 4.6 | |
| 5 | - | - | - | - | - | - | - | - | - | |
| KILOMETER COUNTER [KM] | 0 | NEXT SERVICE [KM] | 800000 | ECU SUPPLY VOLTAGE [V] | 21.0 | VALVE SUPPLY VOLTAGE [V] | 21.2 | | | |
| AIR GAP SPEED SL [KM/H] | 3.5 | AIR GAP SPEED SR [KM/H] | 3.5 | AIR GAP SPEED SAL [KM/H] | 1.0 | AIR GAP SPEED SAR [KM/H] | 3.4 | | | |
| EOL TEST RESULTS | | | | | | | | | | |
| System pressure test | | Succeeded | | - | | - | | | | |
| Warning lamp test | | Succeeded | | - | | - | | | | |
| LSF test | | Succeeded | | - | | - | | | | |
| SL wheel speed sensor test | | Succeeded | | - | | - | | | | |
| SR wheel speed sensor test | | Succeeded | | - | | - | | | | |
| Axle modulator test | | Succeeded | | - | | - | | | | |
| RSP installation test | | Succeeded | | - | | - | | | | |
| Active faults in the system | | No | | - | | - | | | | |
| TESTER NAME | Chris Clarke | | | SIGNATURE | | | | | | |
| LOCATION | Genese Ltd | | | | | | | | | |
| DATE | 03/08/2008 | | | | | | | | | |
| ADDITIONAL INFORMATION | Fonterra Retro No 5 | | | | | | | | | |



Company: Genese Ltd
Author: Chris Clarke

Created: 3/08/2008
Modified: 3/08/2008

Document: 7A8JW0T0298049677
Page: 1 / 7

Database version: 9.0.13

Calculation in accordance with ECE Regulation 13 (10 Series) and EEC Directive 71/320 EEC (2002/79/EC) using Knorr-Bremse Braking System Designer software (level 9.0).

Results based on vehicle data and components as defined by the Braking System Designer program user.

No liability assumed by Knorr-Bremse regarding the use of non-Knorr-Bremse product data.

Customer: Fonterra Co-operative Ltd

Vehicle: 7A8JW0T0298049677

Project: 4 axle milk collection full trailer

Vehicle

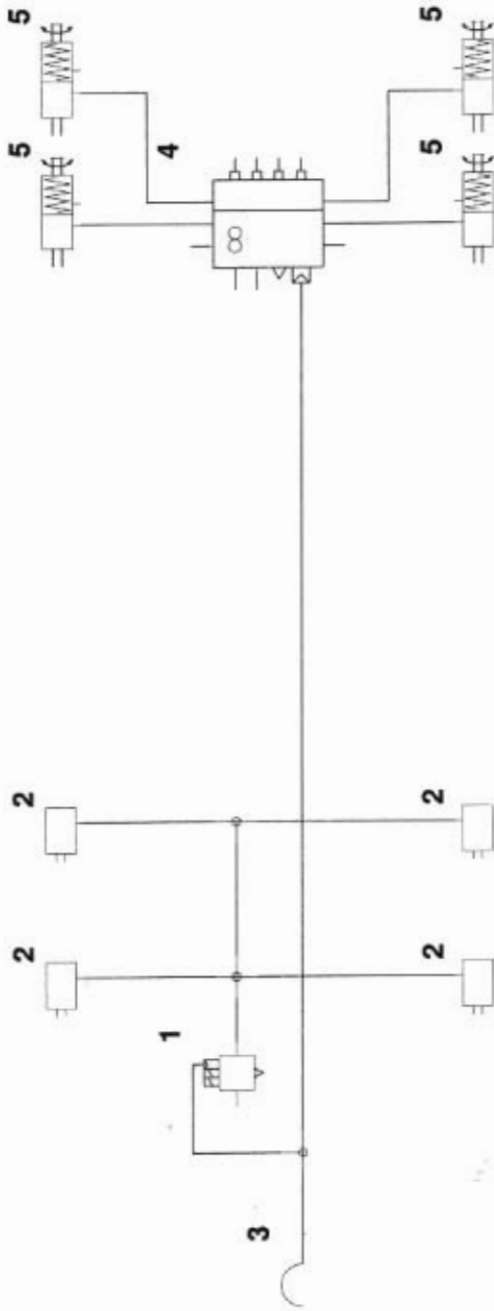
| | |
|---|---------------------|
| Type | 2x2 Drawbar trailer |
| Calculated effective wheelbase [m] | 4.98 |
| Laden (max.) mass [kg] | 26000.00 |
| Laden (max.) front axle group load [kg] | 13000.00 |
| Laden vertical position of CoG [m] | 2.00 |
| Unladen (min.) mass [kg] | 6718.00 |
| Unladen (min.) front axle group load [kg] | 4048.00 |
| Unladen vertical position of CoG [m] | 1.36 |
| Laden/unladen front air spring press. [bar] | -/- |
| Laden/unladen rear air spring press. [bar] | 4.50/0.40 |

Axles

| Type | Axle 1 | Axle 2 | Axle 3 | Axle 4 |
|--|--|--|--|--|
| Tyre size | MERITOR (ROR) 361-0022-02-FBKV 265/70 R 19.5 | MERITOR (ROR) 361-0022-02-FBKV 265/70 R 19.5 | MERITOR (ROR) 361-0022-02-FBKV 265/70 R 19.5 | MERITOR (ROR) 361-0022-02-FBKV 265/70 R 19.5 |
| Dyn. tyre radius [mm] | 421 | 421 | 421 | 421 |
| Stat. tyre radius [mm] | 401 | 401 | 401 | 401 |
| Brake type | Disc Elsa195 LE | Disc Elsa195 LE | Disc Elsa195 LE | Disc Elsa195 LE |
| Brake size [mm] or drum/disc radius [mm] | 340x200 | 340x200 | 340x200 | 340x200 |
| Actuator size | 16 | 16 | 16/24 | 16/24 |
| Actuator force at 6,5 bar [N] | 6590 | 6590 | 6260 | 6260 |
| Slack adjuster length [mm] | - | - | - | - |
| Thresh.mom.[Nm] or force[N] | 81.00 | 81.00 | 81.00 | 81.00 |
| Brake Factor by Annex 19 | 20.3 | 20.3 | 20.3 | 20.3 |
| Discbrake lever length [mm] | 74 | 74 | 74 | 74 |
| Internal brake factor (C') | - | - | - | - |
| Mechanical efficiency (Eta) | - | - | - | - |
| Internal brake factor x | - | - | - | - |
| Mech. efficiency (C' x Eta) | - | - | - | - |
| S-Cam radius [mm] or mech.ratio or wedge angle[-] | - | - | - | - |
| Friction material | ROR 8616 AF | ROR 8616 AF | ROR 8616 AF | ROR 8616 AF |

Calculation pressure [bar]: 6.5

Warning! This brake calculation has been produced using information from a source not controlled by Knorr-Bremse. The results produced by this calculation are therefore dependent upon the accuracy of this information and Knorr-Bremse does not take responsibility for any resulting errors.



Part list

| No. | Name | Type | Characteristics | Qty. |
|-----|-----------------------|--------|-----------------|------|
| 1 | ABS Modulator | BR9234 | - | 1 |
| 2 | Brake Chamber | ROR | - | 4 |
| 3 | Coupling head - brake | KU1400 | - | 1 |
| 4 | Trailer EBS ECU | ES20.. | - | 1 |
| 5 | Spring Brake Actuator | ROR | - | 4 |

Calculation pressure [bar]: 6.5

Warning! This brake calculation has been produced using information from a source not controlled by Knorr-Bremse. The results produced by this calculation are therefore dependent upon the accuracy of this information and Knorr-Bremse does not take responsibility for any resulting errors.



Company: Genese Ltd
Author: Chris Clarke

Created: 3/08/2008
Modified: 3/08/2008

Document: 7A8JW0T0298049677
Page: 3 / 7

Database version: 9.0.13

Laden vehicle

| | Intact system | Front circuit only | Rear circuit only | Calculation press. |
|----------------------------------|---------------|--------------------|-------------------|--------------------|
| Deceleration [m/s ²] | 6.39 | - | - | 5.79 |
| Pressure [bar] | 8.50 | - | - | 6.50 |

Unladen vehicle

| | Intact system | Front circuit only | Rear circuit only | Calculation press. |
|----------------------------------|---------------|--------------------|-------------------|--------------------|
| Deceleration [m/s ²] | 14.29 | - | - | 14.29 |
| Pressure [bar] | 8.50 | - | - | 6.50 |

Calculation pressure [bar]: 6.5

Warning! This brake calculation has been produced using information from a source not controlled by Knorr-Bremse. The results produced by this calculation are therefore dependent upon the accuracy of this information and Knorr-Bremse does not take responsibility for any resulting errors.



Miscellaneous

Coupling head pressure where z = 22.5% (laden case)

Pressure [bar] : 3.00

Brake chamber pressure [bar] where z = 22.5% (laden case)

Axle1 : 2.52 Axle2 : 2.52 Axle3 : 2.27 Axle4 : 2.27

Automatic braking performance (at 6.0 [bar], laden case)

Deceleration [m/s²] : 3.86

Braking rate [%] 39.3

Vehicle performance in case of a load sensing device control failure (at 6.5 [bar], laden case)

Front axle group

Deceleration [m/s²] : -

Braking rate [%] -

Rear axle group

Deceleration [m/s²] : 5.79

Braking rate [%] 59.0

Parking brake Laden vehicle Unladen vehicle

| Max.slope [%] | Up | Down | Up | Down |
|---|--------|-------|--------|-------|
| (must be > 18%) | -46.52 | 31.03 | -41.96 | 26.91 |
| (max.spring force = 7120 N at 30 mm strok Required spring force at 18% slope | | | | |
| Axle 1 [N] | - | - | - | - |
| Axle 2 [N] | - | - | - | - |
| Axle 3 [N] | 2935 | 2935 | 820 | 820 |
| Axle 4 [N] | 2935 | 2935 | 820 | 820 |

Calculation pressure [bar]: 6.5

Warning! This brake calculation has been produced using information from a source not controlled by Knorr-Bremse. The results produced by this calculation are therefore dependent upon the accuracy of this information and Knorr-Bremse does not take responsibility for any resulting errors.



Company: Genese Ltd
 Author: Chris Clarke

Created: 3/08/2008
 Modified: 3/08/2008

Document: 7A8JW0T0298049677
 Page: 5 / 7

Database version: 9.0.13

Trailer EBS parameters

Number of axles: 4
 Number of teeth: 90
 Dynamic tyre radius [cm]: 42.1
 Inshot pressure [bar]: 0.56
 Coupling head pressure [bar]: 0.70
 Pressure compensation (at 1.6 bar) [bar]: 0.20
 Output pressure (at 6.5 bar) [bar]

Laden: 4.60
 Unladen: 1.40

Air spring pressure [bar]

Laden : 4.50
 Unladen : 0.40

Axle boogie load [kg]

Laden: 13000
 Unladen: 2670

Pressure limitation [bar]

4.60
 -0.20

Corresponding sheet on the PC Diagnostic tool (ECU Talk)

| Coupling head pressure [bar] | Brake chamber pressure [bar] | |
|------------------------------|------------------------------|-------|
| | Unladen | Laden |
| 0.70 | 0.56 | |
| 1.6 | 0.75 | 1.39 |
| 6.5 | 1.40 | 4.60 |

| Brake pressure compensation at 1.6 bar coupling head pressure [bar] | |
|---|------|
| | 0.20 |

| Air spring pressure [bar] | Laden : | |
|---------------------------|-----------|---------|
| | Unladen : | Laden : |
| | 0.40 | 4.50 |

| Axle boogie load [kg] | Laden | |
|-----------------------|---------|-------|
| | Unladen | Laden |
| | 2670 | 13000 |

Calculation pressure [bar]: 6.5

Warning! This brake calculation has been produced using information from a source not controlled by Knorr-Bremse. The results produced by this calculation are therefore dependent upon the accuracy of this information and Knorr-Bremse does not take responsibility for any resulting errors.



Company: Genese Ltd
Author: Chris Clarke

Created: 3/08/2008 Document: 7A8JW0T0298049677
Modified: 3/08/2008 Page: 6 / 7

Database version: 9.0.13

Load sensing valve settings at 6.5 bar on rear axle group. Type: ES20..

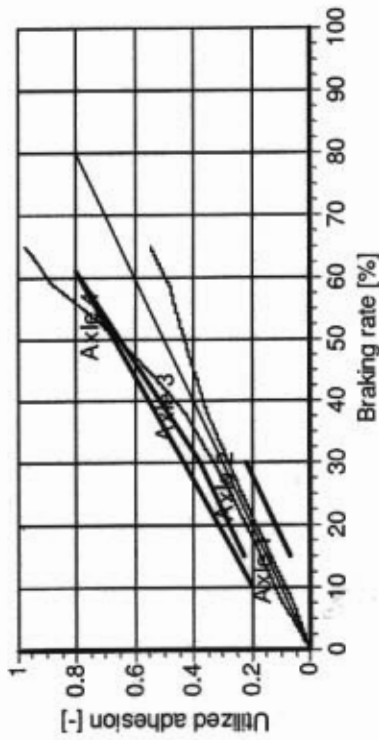
| Gross weight [kg] | Axle load [kg] | Air spring pressure [bar] | LSV ratio [-] | LSV Output pressure [bar] input:6,5bar 6.5 bar |
|-------------------|----------------|---------------------------|---------------|---|
| 26000 | 6500 | 4.50 | 1.41 | 4.6 |
| 25000 | 6250 | 4.30 | 1.46 | 4.4 |
| 24000 | 6000 | 4.10 | 1.52 | 4.3 |
| 23000 | 5750 | 3.90 | 1.57 | 4.1 |
| 22000 | 5500 | 3.71 | 1.63 | 4.0 |
| 21000 | 5250 | 3.51 | 1.70 | 3.8 |
| 20000 | 5000 | 3.31 | 1.77 | 3.7 |
| 12718 | 2835 | 1.59 | 2.79 | 2.3 |
| 11718 | 2585 | 1.39 | 2.99 | 2.2 |
| 10718 | 2335 | 1.19 | 3.22 | 2.0 |
| 9718 | 2085 | 1.00 | 3.49 | 1.9 |
| 8718 | 1835 | 0.80 | 3.80 | 1.7 |
| 7718 | 1585 | 0.60 | 4.18 | 1.6 |
| 6718 | 1335 | 0.40 | 4.64 | 1.4 |

Calculation pressure [bar]: 6.5

Warning! This brake calculation has been produced using information from a source not controlled by Knorr-Bremse. The results produced by this calculation are therefore dependent upon the accuracy of this information and Knorr-Bremse does not take responsibility for any resulting errors.

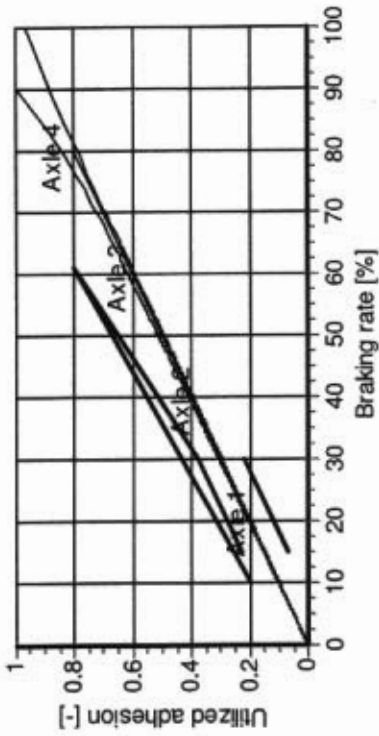


Laden vehicle - adhesion utilisation



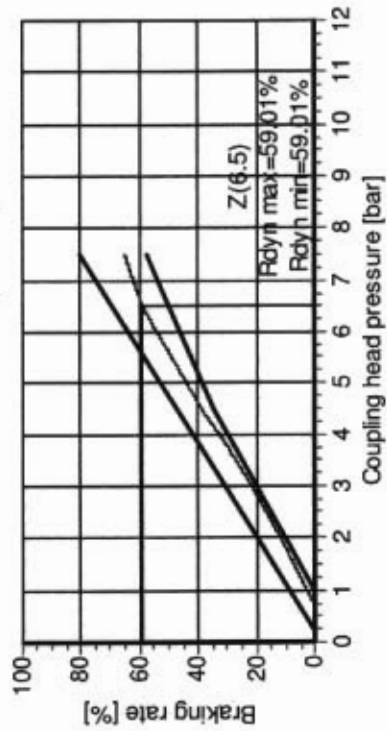
(With anti-lock system the adhesion requirements do not have to be fulfilled.)

Unladen vehicle - adhesion utilisation

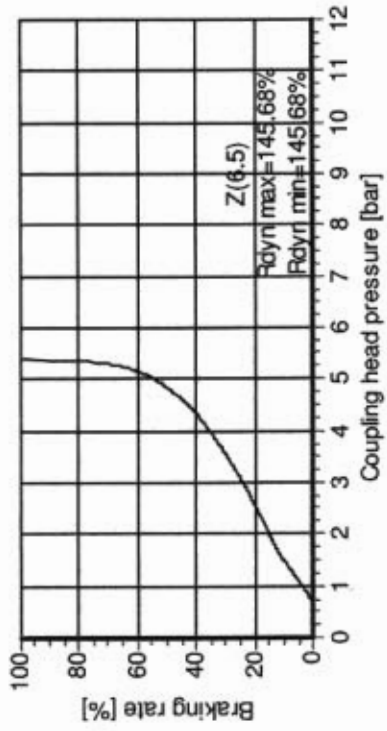


(With anti-lock system the adhesion requirements do not have to be fulfilled.)

Laden vehicle - compatibility



Unladen vehicle - compatibility



Calculation pressure [bar]: 6.5

Warning! This brake calculation has been produced using information from a source not controlled by Knorr-Bremse. The results produced by this calculation are therefore dependent upon the accuracy of this information and Knorr-Bremse does not take responsibility for any resulting errors.



Company: Genese Ltd
Author: Chris Clarke

Created: 3/08/2008
Modified: 3/08/2008

Document: 7A&JW0T0298049677
Page: 1 / 7

Database version: 9.0.13

Calculation in accordance with ECE Regulation 13 (10 Series) and EEC Directive 71/320 EEC (2002/78/EC) using Knorr-Bremse Braking System Designer software (level 9.0).
Results based on vehicle data and components as defined by the Braking System Designer program user.
No liability assumed by Knorr-Bremse regarding the use of non-Knorr-Bremse product data.

Customer: Fonterra Co-operative Ltd

Vehicle: 7A&JW0T0298049677

Project: 4 axle milk collection full trailer

Vehicle

Type 2x2 Drawbar trailer
Calculated effective wheelbase [m] 4.98
Laden (max.) mass [kg] 26000.00
Laden (max.) front axle group load [kg] 13000.00
Laden vertical position of CoG [m] 2.00
Unladen (min.) mass [kg] 6718.00
Unladen (min.) front axle group load [kg] 4048.00
Unladen vertical position of CoG [m] 1.36
Laden/unladen front air spring press. [bar] -/-
Laden/unladen rear air spring press. [bar] 4.50/0.40

Axles

| | Axle 1 | Axle 2 | Axle 3 | Axle 4 |
|--|-----------------------------------|-----------------------------------|-----------------------------------|-----------------------------------|
| Type | MERITOR (ROR) | MERITOR (ROR) | MERITOR (ROR) | MERITOR (ROR) |
| Tyre size | 361-0022-02-FBKV 265/70 R 19.5 | 361-0022-02-FBKV 265/70 R 19.5 | 361-0022-02-FBKV 265/70 R 19.5 | 361-0022-02-FBKV 265/70 R 19.5 |
| Dyn. tyre radius [mm] | 421 | 421 | 421 | 421 |
| Stat. tyre radius [mm] | 401 | 401 | 401 | 401 |
| Brake type | Disc Elsa195 LE | Disc Elsa195 LE | Disc Elsa195 LE | Disc Elsa195 LE |
| Brake size [mm] or drum/disc radius [mm] | 340x200 | 340x200 | 340x200 | 340x200 |
| Actuator size | 16 | 16 | 16/24 | 16/24 |
| Actuator force at 6,5 bar [N] | 6590 | 6590 | 6260 | 6260 |
| Slack adjuster length [mm] | - | - | - | - |
| Thresh.mom. [Nm] or force [N] | 81.00 | 81.00 | 81.00 | 81.00 |
| Brake Factor by Annex 19 | 20.3 | 20.3 | 20.3 | 20.3 |
| Discbrake lever length [mm] | 74 | 74 | 74 | 74 |
| Internal brake factor (C*) | - | - | - | - |
| Mechanical efficiency (Eta) | - | - | - | - |
| Internal brake factor x | - | - | - | - |
| Mech. efficiency (C* x Eta) | - | - | - | - |
| S-Cam radius [mm] or mech.ratio or wedge angle[-] | - | - | - | - |
| Friction material | ROR 8616 AF | ROR 8616 AF | ROR 8616 AF | ROR 8616 AF |

Calculation pressure [bar]: 6.5

Warning! This brake calculation has been produced using information from a source not controlled by Knorr-Bremse. The results produced by this calculation are therefore dependent upon the accuracy of this information and Knorr-Bremse does not take responsibility for any resulting errors.

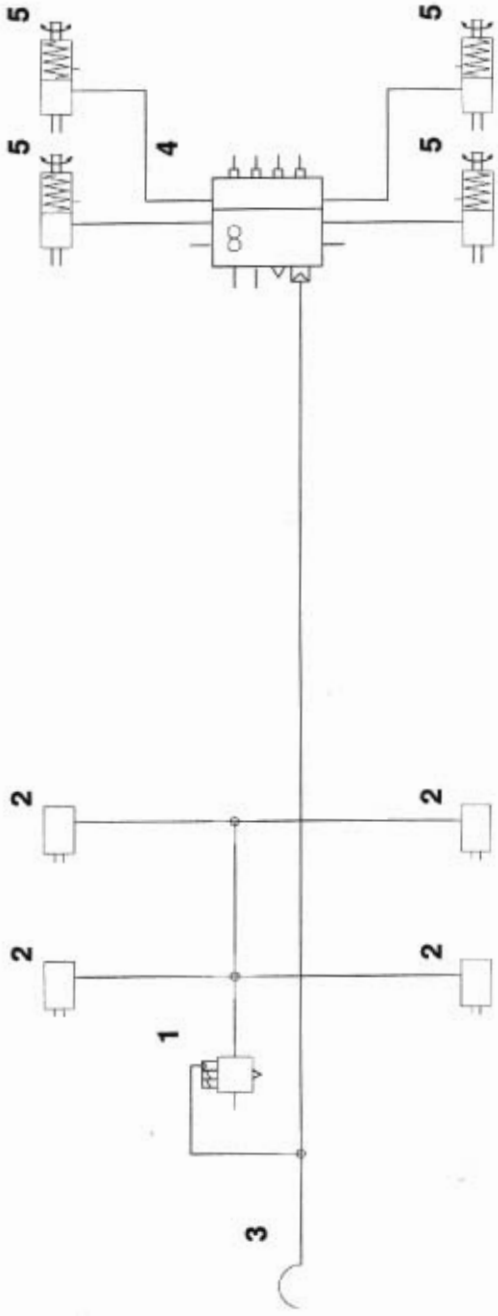


Company: Genese Ltd
Author: Chris Clarke

Created: 3/08/2008
Modified: 3/08/2008

Document: 7A8JW0T0298049677
Page: 2 / 7

Database version: 9.0.13



Part list

| No. | Name | Type | Characteristics | Qty. |
|-----|-----------------------|--------|-----------------|------|
| 1 | ABS Modulator | BR9234 | - | 1 |
| 2 | Brake Chamber | ROR | - | 4 |
| 3 | Coupling head - brake | KU1400 | - | 1 |
| 4 | Trailer EBS ECU | ES20.. | - | 1 |
| 5 | Spring Brake Actuator | ROR | - | 4 |

Calculation pressure [bar]: 6.5

Warning! This brake calculation has been produced using information from a source not controlled by Knorr-Bremse. The results produced by this calculation are therefore dependent upon the accuracy of this information and Knorr-Bremse does not take responsibility for any resulting errors.



Company: Genese Ltd
Author: Chris Clarke

Created: 3/08/2008
Modified: 3/08/2008

Document: 7A8JW0T0298049677
Page: 3 / 7

Database version: 9.0.13

Laden vehicle

| | Intact system | Front circuit only | Rear circuit only | Calculation press. |
|----------------------------------|---------------|--------------------|-------------------|--------------------|
| Deceleration [m/s ²] | 6.39 | - | - | 5.79 |
| Pressure [bar] | 8.50 | - | - | 6.50 |

Unladen vehicle

| | Intact system | Front circuit only | Rear circuit only | Calculation press. |
|----------------------------------|---------------|--------------------|-------------------|--------------------|
| Deceleration [m/s ²] | 14.29 | - | - | 14.29 |
| Pressure [bar] | 8.50 | - | - | 6.50 |

Calculation pressure [bar]: 6.5

Warning! This brake calculation has been produced using information from a source not controlled by Knorr-Bremse. The results produced by this calculation are therefore dependent upon the accuracy of this information and Knorr-Bremse does not take responsibility for any resulting errors.



Miscellaneous

Coupling head pressure where z = 22.5% (laden case)

Pressure [bar] : 3.00

Brake chamber pressure [bar] where z = 22.5% (laden case)

Axle1 : 2.52 Axle2 : 2.52 Axle3 : 2.27 Axle4 : 2.27

Automatic braking performance (at 6.0 [bar], laden case)

Deceleration [m/s²] : 3.86

Braking rate [%] 39.3

Vehicle performance in case of a load sensing device control failure (at 6.5 [bar], laden case)

Front axle group

Deceleration [m/s²] : -

Braking rate [%] -

Rear axle group

Deceleration [m/s²] : 5.79

Braking rate [%] 59.0

Parking brake

Laden vehicle Unladen vehicle

| Max.slope [%] | Up | Down | Up | Down |
|-----------------|--------|-------|--------|-------|
| (must be > 18%) | -46.52 | 31.03 | -41.96 | 26.91 |

(max.spring force = 7120 N at 30 mm strok

Required spring force at 18% slope

Axle 1 [N] -

Axle 2 [N] -

Axle 3 [N] 2935

Axle 4 [N] 2935

Calculation pressure [bar]: 6.5

Warning! This brake calculation has been produced using information from a source not controlled by Knorr-Bremse. The results produced by this calculation are therefore dependent upon the accuracy of this information and Knorr-Bremse does not take responsibility for any resulting errors.



Company: Genese Ltd
 Author: Chris Clarke

Created: 3/08/2008
 Modified: 3/08/2008

Document: 7A8JW0T0298049677
 Page: 5 / 7

Database version: 9.0.13

Trailer EBS parameters

Number of axles: 4
 Number of teeth: 90
 Dynamic tyre radius [cm]: 42.1
 Inshot pressure [bar]: 0.56
 Coupling head pressure [bar]: 0.70
 Pressure compensation (at 1.6 bar) [bar]: 0.20
 Output pressure (at 6.5 bar) [bar]

Laden: 4.60
 Unladen: 1.40

Air spring pressure [bar]

Laden : 4.50
 Unladen : 0.40

Axle boogie load [kg]

Laden: 13000
 Unladen: 2670

Pressure limitation [bar]

4.60

Slip differential [%]

-0.20

Corresponding sheet on the PC Diagnostic tool (ECU Talk)

| Coupling head pressure [bar] | Brake chamber pressure [bar] | |
|------------------------------|------------------------------|-------|
| | Unladen | Laden |
| 0.70 | 0.56 | |
| 1.6 | 0.75 | 1.39 |
| 6.5 | 1.40 | 4.60 |

| Brake pressure compensation at 1.6 bar coupling head pressure [bar] |
|---|
| 0.20 |

| Air spring pressure [bar] | Unladen : | Laden : |
|---------------------------|-----------|---------|
| | | 0.40 |

| Axle boogie load [kg] | Unladen | Laden |
|-----------------------|---------|-------|
| | | 2670 |

Calculation pressure [bar]: 6.5

Warning! This brake calculation has been produced using information from a source not controlled by Knorr-Bremse. The results produced by this calculation are therefore dependent upon the accuracy of this information and Knorr-Bremse does not take responsibility for any resulting errors.



Company: Genese Ltd
Author: Chris Clarke

Created: 3/08/2008
Modified: 3/08/2008

Document: 7A8JW0T0298049677
Page: 6 / 7

Database version: 9.0.13

Load sensing valve settings at 6.5 bar on rear axle group. Type: ES20..

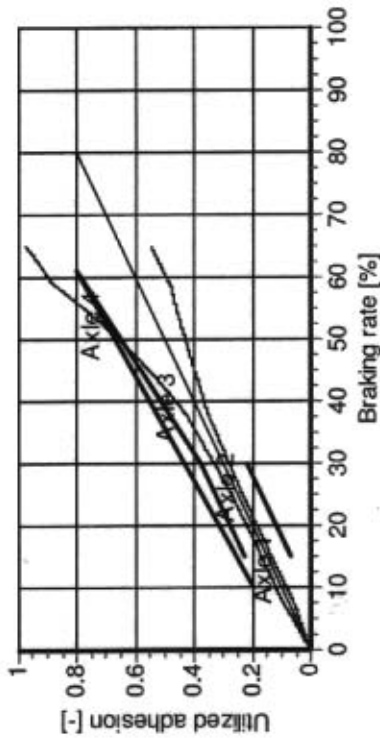
| Gross weight [kg] | Axle load [kg] | Air spring pressure [bar] | LSV ratio [-] | LSV Output pressure [bar] | |
|-------------------|----------------|---------------------------|---------------|---------------------------|---------|
| | | | | input:6,5bar | 6.5 bar |
| 26000 | 6500 | 4.50 | 1.41 | 4.6 | 4.6 |
| 25000 | 6250 | 4.30 | 1.46 | 4.4 | 4.4 |
| 24000 | 6000 | 4.10 | 1.52 | 4.3 | 4.3 |
| 23000 | 5750 | 3.90 | 1.57 | 4.1 | 4.1 |
| 22000 | 5500 | 3.71 | 1.63 | 4.0 | 4.0 |
| 21000 | 5250 | 3.51 | 1.70 | 3.8 | 3.8 |
| 20000 | 5000 | 3.31 | 1.77 | 3.7 | 3.7 |
| 12718 | 2835 | 1.59 | 2.79 | 2.3 | 2.3 |
| 11718 | 2585 | 1.39 | 2.99 | 2.2 | 2.2 |
| 10718 | 2335 | 1.19 | 3.22 | 2.0 | 2.0 |
| 9718 | 2085 | 1.00 | 3.49 | 1.9 | 1.9 |
| 8718 | 1835 | 0.80 | 3.80 | 1.7 | 1.7 |
| 7718 | 1585 | 0.60 | 4.18 | 1.6 | 1.6 |
| 6718 | 1335 | 0.40 | 4.64 | 1.4 | 1.4 |

Calculation pressure [bar]: 6.5

Warning! This brake calculation has been produced using information from a source not controlled by Knorr-Bremse. The results produced by this calculation are therefore dependent upon the accuracy of this information and Knorr-Bremse does not take responsibility for any resulting errors.

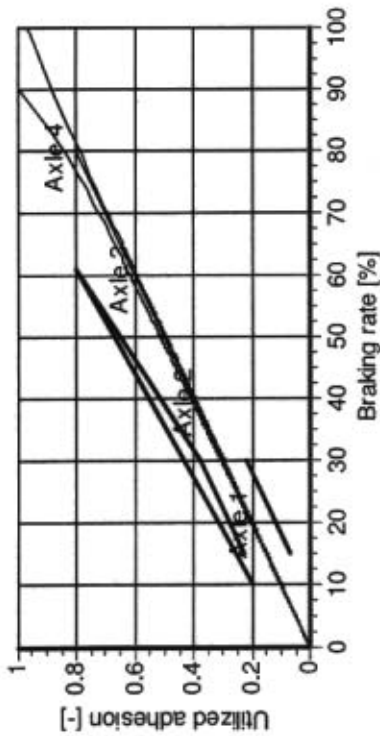


Laden vehicle - adhesion utilisation



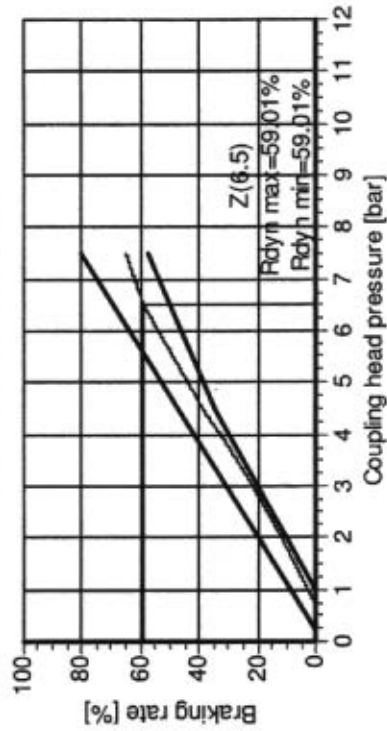
(With anti-lock system the adhesion requirements do not have to be fulfilled.)

Unladen vehicle - adhesion utilisation

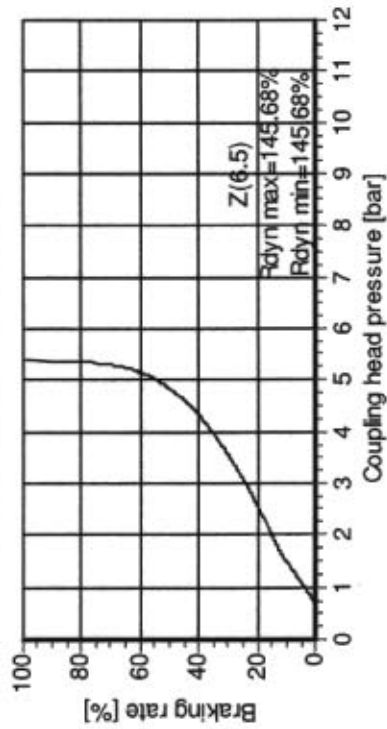


(With anti-lock system the adhesion requirements do not have to be fulfilled.)

Laden vehicle - compatibility



Unladen vehicle - compatibility



Calculation pressure [bar]: 6.5

Warning! This brake calculation has been produced using information from a source not controlled by Knorr-Bremse. The results produced by this calculation are therefore dependent upon the accuracy of this information and Knorr-Bremse does not take responsibility for any resulting errors.