

Heavy Vehicle Specialist Certificate

Heavy Vehicle Specialist Inspector and Inspecting Organisation

Heavy Vehicle Specialist Inspector's Name (PRINT IN CAPS)

ID

CHRIS CLARKE

ETC.

Vehicle Registration*

VIN / Chassis Number

7A85N0JC297578192

Component being certified:

Chassis Modification

Load Anchorage

Log Bolsters

Certification Category

Towing Connection

Brake Code

SRT

HUEK

Description of Work

CARRY OUT SET UP OF TRAILER EBS SYSTEM AND COMPLY TO NZ HEAVY VEHICLE BRAKE RULE 32015 SCHEDULE 5

Code/Standard Certified to

Component Load Rating(s)

NZHUBR 32015 SCHED 5

General Drawing Number(s)

N/A

N/A

Supporting Documents

BRAKE PERFORMANCE CALCULATION

*Special Conditions

N/A

Certification Expiry Date

OR Hubodometer Reading (whichever comes first)

N/A

Designer's ID (if certified by a manufacturer)

I the undersigned, declare that I am the Heavy Vehicle Specialist Inspector identified above and I hold a current valid appointment. I certify that the above mentioned vehicle component's design, manufacture and installation, and this certification complies in all respects with the Land Transport Rule Vehicle Standards Compliance 2002 and my Deed of Appointment. To the best of my knowledge the information contained in this Certificate is true and correct.

Inspector's / Delegate's Signature

*Delegate's Name (PRINT IN CAPS)

Date

Number

24.09.2008

306861

COF Vehicle Inspector ID:

COF Vehicle Inspector Signature:

Date

All fields excluding those marked with * must be completed before this certificate can be accepted.



Calculation in accordance with ECE Regulation 13 (10 Series) and EEC Directive 71/320 EEC (2002/78/EC) using Knorr-Bremse Braking System Designer software (level 9.0).
Results based on vehicle data and components as defined by the Braking System Designer program user.
No liability assumed by Knorr-Bremse regarding the use of non-Knorr-Bremse product data.

Customer: Fonterra Co-op Ltd
Vehicle: 7A85N0J0297578192
Project: 4 axle milk collection full trailer

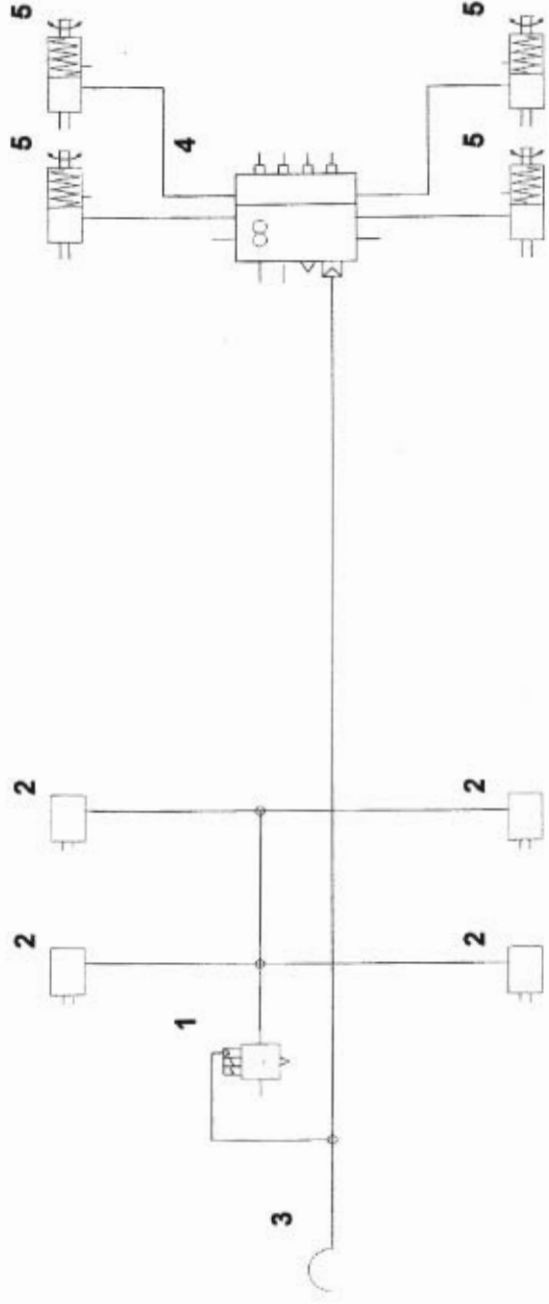
Vehicle

Type	2x2 Drawbar trailer
Calculated effective wheelbase [m]	4.75
Laden (max.) mass [kg]	26000.00
Laden (max.) front axle group load [kg]	13000.00
Laden vertical position of CoG [m]	1.96
Unladen (min.) mass [kg]	6718.00
Unladen (min.) front axle group load [kg]	4048.00
Unladen vertical position of CoG [m]	1.27
Laden/unladen front air spring press. [bar]	-/-
Laden/unladen rear air spring press. [bar]	4 50/0.50

Axles	Axle 1	Axle 2	Axle 3	Axle 4
Type	MERITOR (ROR) 361-0022-02-FBKV	MERITOR (ROR) 361-0022-02-FBKV	MERITOR (ROR) 361-0022-02-FBKV	MERITOR (ROR) 361-0022-02-FBKV
Tyre size	265/70 R 19.5	265/70 R 19.5	265/70 R 19.5	265/70 R 19.5
Dyn. tyre radius [mm]	421	421	421	421
Stat. tyre radius [mm]	401	401	401	401
Brake type	Disc Elsa195 LE	Disc Elsa195 LE	Disc Elsa195 LE	Disc Elsa195 LE
Brake size [mm] or drum/disc radius [mm]	340x200	340x200	340x200	340x200
Actuator size	16	16	16/24	16/24
Actuator force at 6,5 bar [N]	6590	6590	6260	6260
Slack adjuster length [mm]	-	-	-	-
Thresh.mom.[Nm] or force[N]	81.00	81.00	81.00	81.00
Brake Factor by Annex 19	20.3	20.3	20.3	20.3
Discbrake lever length [mm]	74	74	74	74
Internal brake factor (C*)	-	-	-	-
Mechanical efficiency (Eta)	-	-	-	-
Internal brake factor x Mech. efficiency (C* x Eta)	-	-	-	-
S-Cam radius [mm] or mech.ratio or wedge angle[-]	-	-	-	-
Friction material	ROR 8616 AF	ROR 8616 AF	ROR 8616 AF	ROR 8616 AF

Calculation pressure [bar]: 6.5

Warning! This brake calculation has been produced using information from a source not controlled by Knorr-Bremse. The results produced by this calculation are therefore dependent upon the accuracy of this information and Knorr-Bremse does not take responsibility for any resulting errors.



Part list

No.	Name	Type	Characteristics	Qty.
1	ABS Modulator	BR9234	-	1
2	Brake Chamber	ROR	-	4
3	Coupling head - brake	KU1400	-	1
4	Trailer EBS ECU	ES20..	-	1
5	Spring Brake Actuator	ROR	-	4

Calculation pressure [bar]: 6.5

Warning! This brake calculation has been produced using information from a source not controlled by Knorr-Bremse. The results produced by this calculation are therefore dependent upon the accuracy of this information and Knorr-Bremse does not take responsibility for any resulting errors.



Laden vehicle

	Intact system	Front circuit only	Rear circuit only	Calculation press.
Deceleration [m/s ²]	6.39	-	-	5.79
Pressure [bar]	8.50	-	-	6.50

Unladen vehicle

	Intact system	Front circuit only	Rear circuit only	Calculation press.
Deceleration [m/s ²]	14.61	-	-	14.61
Pressure [bar]	8.50	-	-	6.50

Calculation pressure [bar]: 6.5

Warning! This brake calculation has been produced using information from a source not controlled by Knorr-Bremse. The results produced by this calculation are therefore dependent upon the accuracy of this information and Knorr-Bremse does not take responsibility for any resulting errors.



Miscellaneous

Coupling head pressure where z = 22.5% (laden case)

Pressure [bar] : 2.90

Brake chamber pressure [bar] where z = 22.5% (laden case)

Axle1 : 2.56 Axle2 : 2.56 Axle3 : 2.28 Axle4 : 2.28

Automatic braking performance (at 6.0 [bar], laden case)

Deceleration [m/s^2] : 3.86

Braking rate [%] 39.3

Vehicle performance in case of a load sensing device control failure (at 6.5 [bar], laden case)

Front axle group

Deceleration [m/s^2] : -

Braking rate [%] -

Rear axle group

Deceleration [m/s^2] : 5.90

Braking rate [%] 60.2

Parking brake

	Laden vehicle	Unladen vehicle
Max.slope [%]	Up	Down
(must be > 18%)	-46.52	30.82
	Down	Up
	30.82	-41.72
	Up	Down
	41.72	27.02

(max. spring force = 7120 N at 30 mm stroke)

Required spring force at 18% slope

Axle 1 [N]	-
Axle 2 [N]	-
Axle 3 [N]	820
Axle 4 [N]	820

Calculation pressure [bar]: 6.5

Warning! This brake calculation has been produced using information from a source not controlled by Knorr-Bremse. The results produced by this calculation are therefore dependent upon the accuracy of this information and Knorr-Bremse does not take responsibility for any resulting errors.



Trailer EBS parameters

Number of axles: 4
 Number of teeth: 90
 Dynamic tyre radius [cm]: 42.1
 Inshot pressure [bar]: 0.56
 Coupling head pressure [bar]: 0.70
 Pressure compensation (at 1.6 bar) [bar]: 0.20
 Output pressure (at 6.5 bar) [bar]

Laden: 4.80
 Unladen: 1.40

Air spring pressure [bar]
 Laden : 4.50
 Unladen : 0.50

Axle boogie load [kg]
 Laden: 13000
 Unladen: 2670

Pressure limitation [bar] 4.60
 Slip differential [%] -0.20

Corresponding sheet on the PC Diagnostic tool (ECU Talk)

Coupling head pressure [bar]	Brake chamber pressure [bar]	
	Unladen	Laden
0.70	0.56	
1.6	0.75	1.42
6.5	1.40	4.80
Brake pressure compensation at 1.6 bar coupling head pressure [bar]		
0.20		
Air spring pressure [bar]	Laden :	
	Unladen :	Laden :
	0.50	4.50
Axle boogie load [kg]	Laden	
	Unladen	Laden
	2670	13000



Load sensing valve settings at 6.5 bar on rear axle group. Type: ES20..

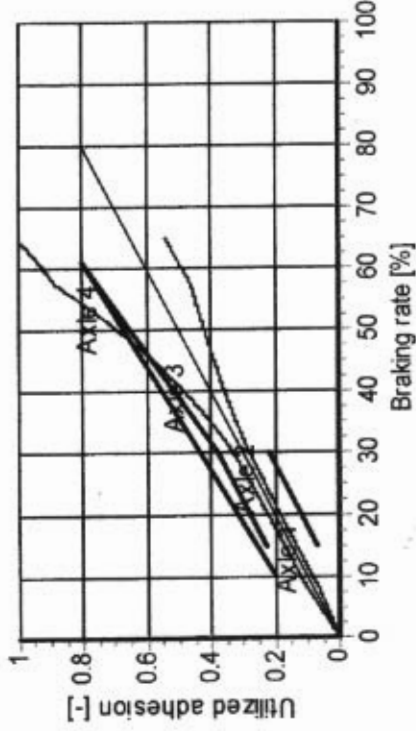
Gross weight [kg]	Axle load [kg]	Air spring pressure [bar]	LSV ratio [-]	LSV Output pressure [bar] input:6,5bar 6.5 bar
26000	6500	4.50	1.41	4.6
25000	6250	4.31	1.41	4.6
24000	6000	4.11	1.45	4.5
23000	5750	3.92	1.51	4.3
22000	5500	3.73	1.57	4.1
21000	5250	3.53	1.63	4.0
20000	5000	3.34	1.70	3.8
12718	2835	1.66	2.72	2.4
11718	2585	1.47	2.92	2.2
10718	2335	1.27	3.16	2.1
9718	2085	1.08	3.43	1.9
8718	1835	0.89	3.76	1.7
7718	1585	0.69	4.15	1.6
6718	1335	0.50	4.64	1.4

Calculation pressure [bar]: 6.5

Warning! This brake calculation has been produced using information from a source not controlled by Knorr-Bremse. The results produced by this calculation are therefore dependent upon the accuracy of this information and Knorr-Bremse does not take responsibility for any resulting errors.

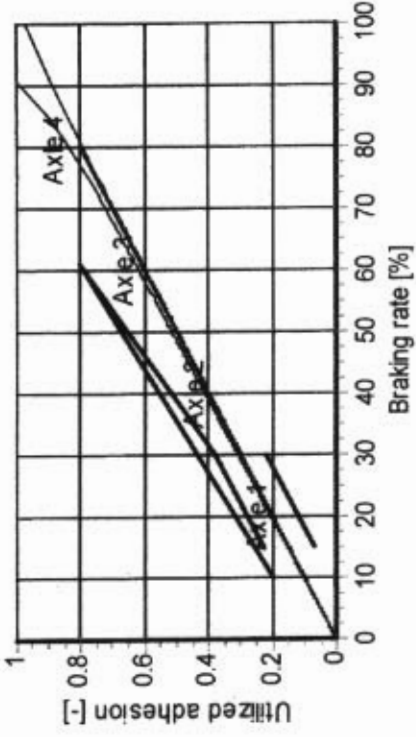


Laden vehicle - adhesion utilisation



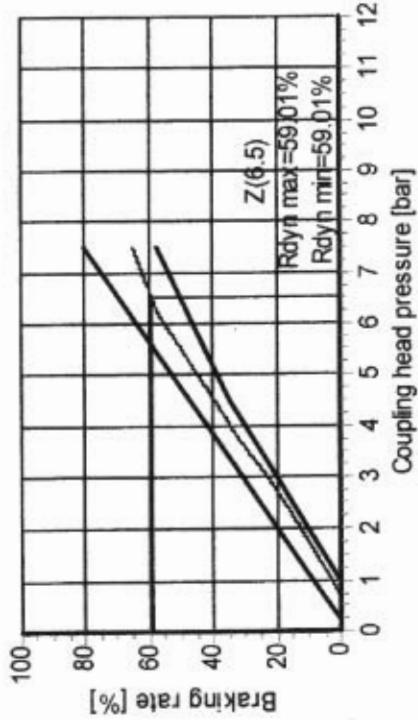
(With anti-lock system the adhesion requirements do not have to be fulfilled.)

Unladen vehicle - adhesion utilisation

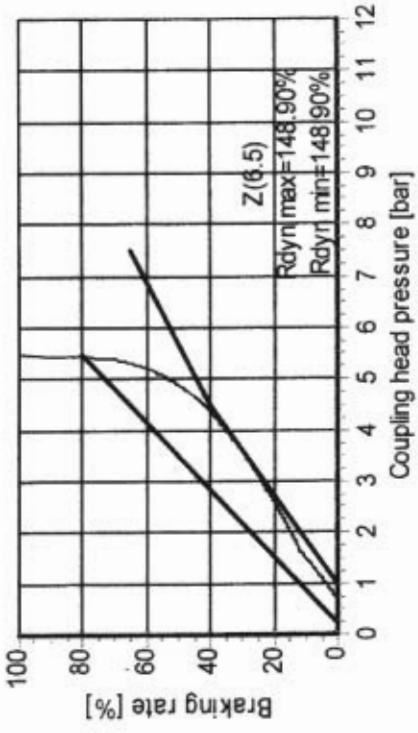


(With anti-lock system the adhesion requirements do not have to be fulfilled.)

Laden vehicle - compatibility



Unladen vehicle - compatibility



Calculation pressure [bar]: 6.5

Warning! This brake calculation has been produced using information from a source not controlled by Knorr-Bremse. The results produced by this calculation are therefore dependent upon the accuracy of this information and Knorr-Bremse does not take responsibility for any resulting errors.



EOL PROTOCOL REPORT

SYSTEM		Trailer EBS		MATCH CODE		ES 2053				
PRODUCTION DATE		week 27 in 2006		SERIAL NUMBER		35072				
PART NUMBER		II 39782		VIN		7A85N0J0297578192				
MANUFACTURER		Nickel Engineering		BRAKE CALCULATION NO.		7A85N0J0297578192				
TYPE		Full trailer		FORMER PIN ACTUAL PIN		30 32 4D 52 30 32 4D 52				
DIFFERENTIAL SLIP [%]	AUX1	OFF	IN A	Disabled		SOFTWARE VERSION	521.17	AXLE	BRAKE CHAMBER SIZE	LEVER LENGTH
	AUX2	OFF	IN B	Disabled		ISS INVERTED	-	1	16	-
	AUX3	OFF	IN C	Disabled		RSP	St 2	2	16	-
	AUX4	ON	IN D	-		ABS CONFIGURATION	4S/3M	3	1604	-
	AUX5	-	POLE WHEEL TEETH SR, SL		90	DYN.TYRE DIAMETER [MM]	840	COMPENSATION AT 1.6 BAR		0.2
	NEAR AXLE PRESSURE LIMIT [BAR]		4.5	CONTROLL PRESSURE [BAR]		6.5	CONTROLL PRESSURE [BAR]		0.7	1.6
AXLE	AXLE LOAD UNLADEN [KG]	SUSP.PRESS.UNL. [BAR]	BRAKE PRESS.UNL. [BAR]	AXLE LOAD LADEN [KG]	SUSP.PRESS.LADEN [BAR]	BRAKE PRESS.LADEN [BAR]				
1	2024	0	-	6500	0	-	-	-		
2	2024	0	-	6500	0	-	-	-		
3	1335	0.5	1.4	6500	4.5	0.56	1.4	4.8		
4	1335	0.5	1.4	6500	4.5	0.56	1.4	4.8		
5	-	-	-	-	-	-	-	-		
KILOMETER COUNTER [KM]	0	NEXT SERVICE [KM]	8000000	ECU SUPPLY VOLTAGE [V]	20.7	VALVE SUPPLY VOLTAGE [V]	21.1			
AIR GAP SPEED SL [KMH]	1.8	AIR GAP SPEED SR [KMH]	1.7	AIR GAP SPEED SAL [KMH]	2.1	AIR GAP SPEED SAR [KMH]	1.0			
EOL TEST RESULTS										
System pressure test		Succeeded		-		-				
Warning lamp test		Succeeded		-		-				
LSF test		Succeeded		-		-				
SL wheel speed sensor test		Succeeded		-		-				
SR wheel speed sensor test		Succeeded		-		-				
Axle modulator test		Succeeded		-		-				
RSP installation test		Succeeded		-		-				
Active faults in the system		No		-		-				
TESTER NAME	Chris Clarke			SIGNATURE 						
LOCATION	Genese Ltd									
DATE	25/09/2008									
ADDITIONAL INFORMATION	Fonterra Hawera No 6									