



Heavy Vehicle Specialist Certificate

Heavy Vehicle Specialist Inspector and Inspecting Organisation

Heavy Vehicle Specialist Inspector's Name (PRINT IN CAPS)

CHRIS CLARKE

ID

CJC

Vehicle Registration*

59499

VIN / Chassis Number

7A8H9000297889505

Component being certified:

Chassis Modification

Load Anchorage

Log Bolsters

Towing Connection

Brakes

SRT

Certification Category

HUEK

Description of Work

CARRY OUT SET UP OF TRAILER EBS SYSTEM IN COMPLIANCE WITH THE NZ HEAVY VEHICLE BRAKE RULE

Code/Standard Certified to

HUBNZ 3205 SCHED 5.

Component Load Rating(s)

N/A.

General Drawing Number(s)

N/A.

Supporting Documents

KWARR - BROMSE BSD PERFORMANCE CALCULATION.

*Special Conditions

N/A

Certification Expiry Date (if applicable)

N/A.

or

Hubodometer Reading (whichever comes first)

Hubodometer Reading grid

Declaration

I the undersigned, declare that I am the Heavy Vehicle Specialist Inspector identified above and I hold a current valid appointment. I certify that the above mentioned vehicle component's design, manufacture and installation, and this certification complies in all respects with the Land Transport Rule Vehicle Standards Compliance 2002 and my Deed of Appointment. To the best of my knowledge the information contained in this Certificate is true and correct.

Designer's ID (if certified by a manufacturer)

Designer's ID field

Inspector's / Delegate's Signature

Inspector's / Delegate's Signature

*Delegate's Name (PRINT IN CAPS)

Delegate's Name field

Date

17.09.2009

Number

322440

COF Vehicle Inspector ID:

Inspector ID

COF Vehicle Inspector Signature:

Inspector Signature

Date

22/09/09

All fields excluding those marked with * must be completed before this certificate can be accepted.



Company: Genese Ltd
 Author: Chris Clarke

Created: 17/09/2009 Document: 7A8H9000297889505
 Modified: 17/09/2009 Page: 1 / 7

Database version: 9.0.13

Calculation in accordance with ECE Regulation 13 (10 Series) and EEC Directive 71/320 EEC (2002/78/EC) using Knorr-Bremse Braking System Designer software (level 9.0).
 Results based on vehicle data and components as defined by the Braking System Designer program user.
 No liability assumed by Knorr-Bremse regarding the use of non-Knorr-Bremse product data.

Vehicle

Type 2x2 Drawbar trailer
 Calculated effective wheelbase [m] 4.77
 Laden (max.) mass [kg] 26000.00
 Laden (max.) front axle group load [kg] 13000.00
 Laden vertical position of CoG [m] 1.80
 Unladen (min.) mass [kg] 5820.00
 Unladen (min.) front axle group load [kg] 2960.00
 Unladen vertical position of CoG [m] 1.20
 Laden/unladen front air spring press. [bar] -/-
 Laden/unladen rear air spring press. [bar] 4.03/0.54

Axles

	Axle 1	Axle 2	Axle 3	Axle 4
Type	MERITOR (ROR)	MERITOR (ROR)	MERITOR (ROR)	MERITOR (ROR)
Tyre size	361-0071-04-FBKV	361-0071-04-FBKV	361-0071-04-FBKV	361-0071-04-FBKV
Dyn. tyre radius [mm]	485	485	485	485
Stat. tyre radius [mm]	462	462	462	462
Brake type	Disc	Disc	Disc	Disc
Brake size [mm] or drum/disc radius [mm]	Eisa195 LE	Eisa195 LE	Eisa195 LE	Eisa195 LE
Actuator size	340x200	340x200	340x200	340x200
Actuator force at 6,5 bar [N]	16	16	16/24	16/24
Stack adjuster length [mm]	6590	6590	6598	6598
Threshold mom. [Nm] or force [N]	81.00	81.00	81.00	81.00
Brake Factor by Annex 19	20.3	20.3	20.3	20.3
Disch. lever length [mm]	74	74	74	74
Internal brake factor (C')	-	-	-	-
Mechanical efficiency (Eta)	-	-	-	-
Internal brake factor x Mech. efficiency (C' x Eta)	-	-	-	-
S-Cam radius [mm] or mech. ratio or wedge angle [-]	-	-	-	-
Friction material	ROR 8616 AF	ROR 8616 AF	ROR 8616 AF	ROR 8616 AF

Calculation pressure [bar]: 6.5

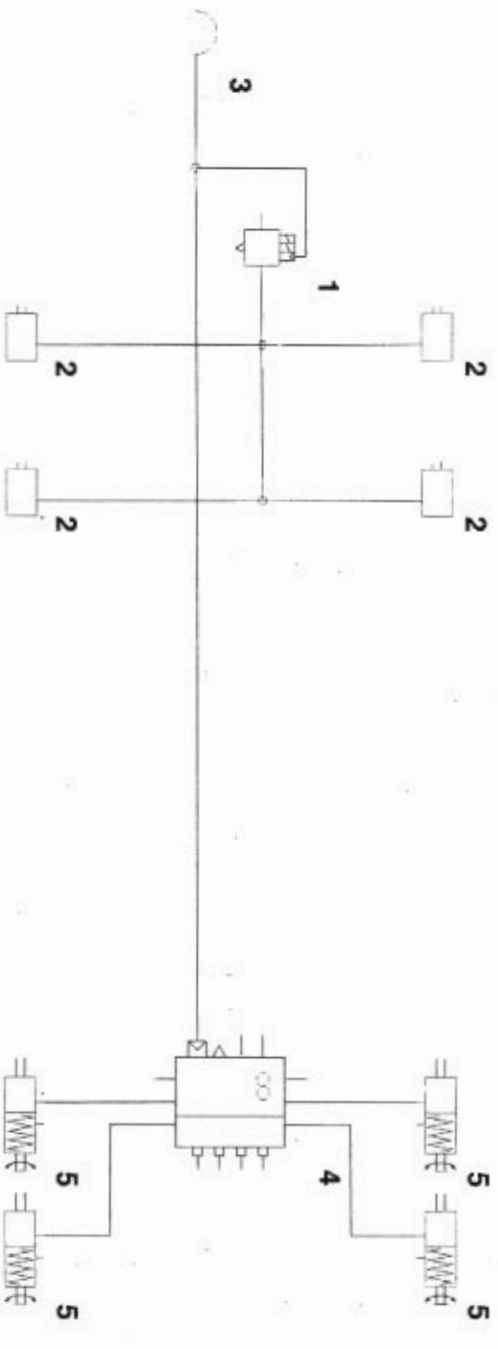
Warning! This brake calculation has been produced using information from a source not controlled by Knorr-Bremse. The results produced by this calculation are therefore dependent upon the accuracy of this information and Knorr-Bremse does not take responsibility for any resulting errors.



Company: Genese Ltd
Author: Chris Clarke

Created: 17/09/2009 Document: 7A8H9000297889505
Modified: 17/09/2009 Page: 2 / 7

Database version: 9.0.13



Part list

No.	Name	Type	Characteristics	Qty.
1	ABS Modulator	BR9234	-	1
2	Brake Chamber	ROR	-	4
3	Coupling head - brake	KU1400	-	1
4	Trailer EBS ECU	ES20..	-	1
5	Spring Brake Actuator	ROR	-	4

Calculation pressure [bar]: 6.5

Warning! This brake calculation has been produced using information from a source not controlled by Knorr-Bremse. The results produced by this calculation are therefore dependent upon the accuracy of this information and Knorr-Bremse does not take responsibility for any resulting errors.



Company: Genese Ltd
Author: Chris Clarke

Created: 17/09/2009 Document: 7A8H9000297889505
Modified: 17/09/2009 Page: 3 / 7

Database version: 9.0.13

System components

No.	Name	Type	Characteristics
1	ABS Modulator	BR9234	Sensors on axle 1
2	Brake Chamber 16" stroke: 64	ROR	BZ 122.1 15/09/2000
3	Brake Chamber 16" stroke: 64	ROR	BZ 122.1 15/09/2000
4	Brake Chamber 16" stroke: 64	ROR	BZ 122.1 15/09/2000
5	Brake Chamber 16" stroke: 64	ROR	BZ 122.1 15/09/2000
6	Coupling head - brake	KU1400	-
7	Trailer EBS ECU	ES20..	Sensors on axle 3
8	Spring Brake Actuator 16/24" stroke: 64/64	ROR	BZ 119.6 01/02/2001
9	Spring Brake Actuator 16/24" stroke: 64/64	ROR	BZ 119.6 01/02/2001
10	Spring Brake Actuator 16/24" stroke: 64/64	ROR	BZ 119.6 01/02/2001
11	Spring Brake Actuator 16/24" stroke: 64/64	ROR	BZ 119.6 01/02/2001

Calculation pressure [bar]: 6.5

Warning! This brake calculation has been produced using information from a source not controlled by Knorr-Bremse. The results produced by this calculation are therefore dependent upon the accuracy of this information and Knorr-Bremse does not take responsibility for any resulting errors.



Company: Genese Ltd
Author: Chris Clarke

Created: 17/09/2009
Modified: 17/09/2009

Document: 7A8H9000297889505
Page: 4 / 7

Database version: 9.0.13

Laden vehicle

	Intact system	Front circuit only	Rear circuit only	Calculation press.
Deceleration [m/s ²]	6.57	-	-	5.53
Pressure [bar]	6.50	-	-	6.50

Calculation pressure [bar]: 6.5

Warning! This brake calculation has been produced using information from a source not controlled by Knorr-Bremse. The results produced by this calculation are therefore dependent upon the accuracy of this information and Knorr-Bremse does not take responsibility for any resulting errors.



Company: Genese Ltd
Author: Chris Clarke

Created: 17/09/2009 Document: 7A8H9000297889505
Modified: 17/09/2009 Page: 5 / 7

Database version: 9.0.13

Miscellaneous

Coupling head pressure where $z = 22.5\%$ (laden case)

Pressure [bar] : 2.90

Brake chamber pressure [bar] where $z = 22.5\%$ (laden case)

Axle1 : 2.76 Axle2 : 2.76 Axle3 : 2.46 Axle4 : 2.46

Automatic braking performance (at 6.0 [bar], laden case)

Deceleration [m/s²] : 3.58

Braking rate [%] 36.5

**Vehicle performance in case of a load sensing device
control failure (at 6.5 [bar], laden case)**

Front axle group

Deceleration [m/s²] : -

Braking rate [%] -

Rear axle group

Deceleration [m/s²] : 5.53

Braking rate [%] 56.4

Calculation pressure [bar]: 6.5

Warning! This brake calculation has been produced using information from a source not controlled by Knorr-Bremse. The results produced by this calculation are therefore dependent upon the accuracy of this information and Knorr-Bremse does not take responsibility for any resulting errors.



Company: Genese Ltd
 Author: Chris Clarke

Created: 17/09/2009
 Modified: 17/09/2009

Document: 7A8H9000297899505
 Page: 6 / 7

Database version: 9.0.13

Trailer EBS parameters

Number of axles: 4
 Number of teeth: 90
 Dynamic tyre radius [cm]: 48.5
 Inshot pressure [bar]: 0.48
 Coupling head pressure [bar]: 0.70
 Pressure compensation (at 1.6 bar) [bar]: 0.20
 Output pressure (at 6.5 bar) [bar]:

Laden: 5.40
 Unladen: 1.60

Air spring pressure [bar]

Laden : 4.03
 Unladen : 0.54

Axle boogie load [kg]

Laden: 13000
 Unladen: 2860

Pressure limitation [bar]

5.40

Slip differential [%]

-0.20

Corresponding sheet on the PC Diagnostic tool (ECU Talk)

Coupling head pressure [bar]	Brake chamber pressure [bar]	
	Unladen	Laden
0.70		0.48
1.6	0.71	1.44
6.5	1.60	5.40

Brake pressure compensation at 1.6 bar coupling head pressure [bar]	0.20
---	------

Air spring pressure [bar]	Unladen :		Laden :	
	0.54		4.03	

Axle boogie load [kg]	Unladen		Laden	
	2860		13000	

Calculation pressure [bar]: 6.5

Warning! This brake calculation has been produced using information from a source not controlled by Knorr-Bremse. The results produced by this calculation are therefore dependent upon the accuracy of this information and Knorr-Bremse does not take responsibility for any resulting errors.

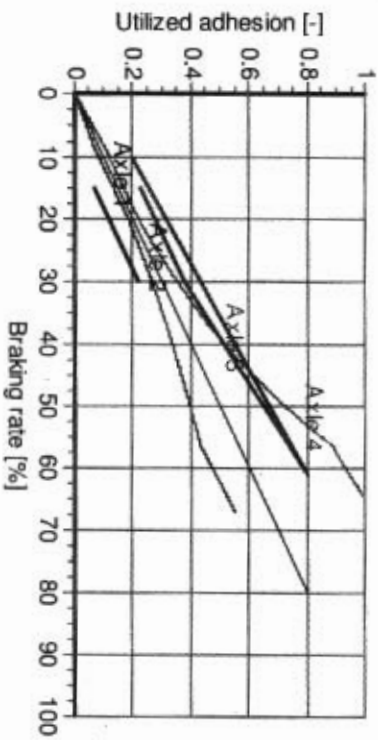


Company: Genesee Ltd
Author: Chris Clarke

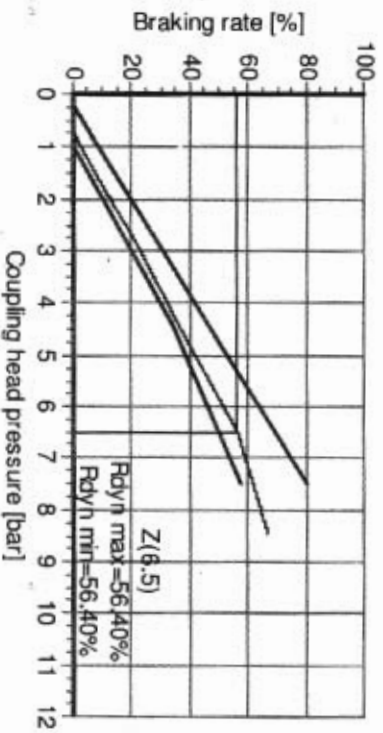
Created: 17/09/2009 Document: 7A8H9000297889505
Modified: 17/09/2009 Page: 7 / 7

Database version: 9.0.13

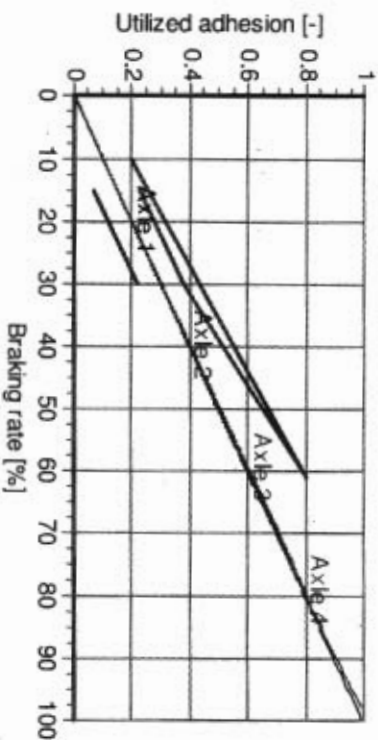
Laden vehicle - adhesion utilisation



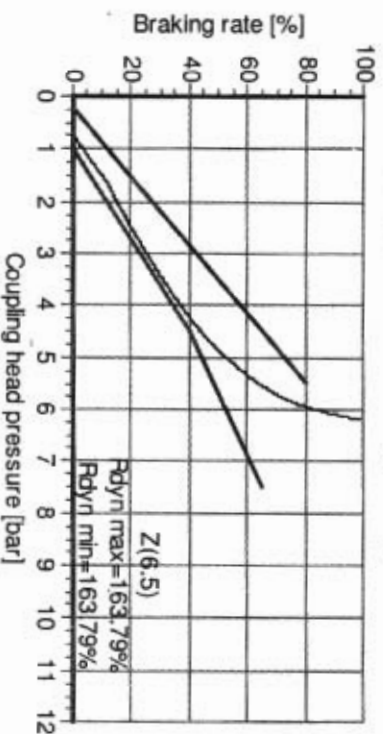
Laden vehicle - compatibility



Unladen vehicle - adhesion utilisation



Unladen vehicle - compatibility



Calculation pressure [bar]: 6.5

Warning! This brake calculation has been produced using information from a source not controlled by Knorr-Bremse. The results produced by this calculation are therefore dependent upon the accuracy of this information and Knorr-Bremse does not take responsibility for any resulting errors.