

IMPORTANT

ArvinMeritor™



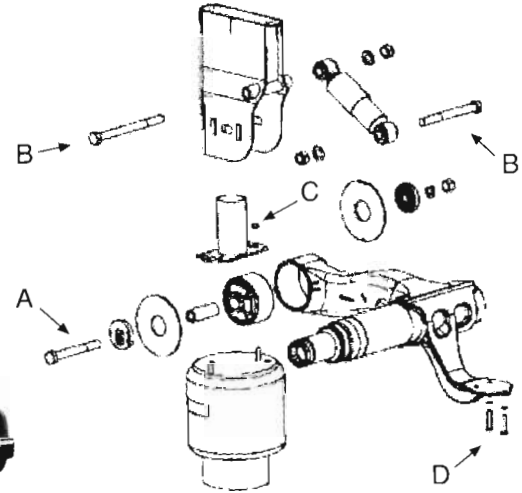
CS9000 SERIES

AIR SUSPENSIONS

TABLE OF TORQUES ON CS FASTENERS

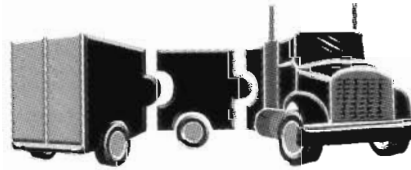
NOTE: All suspensions to be at ride height before fastener torques are applied.

Fastener Description	Torque	
	Nm	lbf ft
A Main pivot nuts (M24)	800	585
B Damper nuts (M24)	500	370
C Top airspring fixing nuts (M12)	45	33
D Airspring piston fixing bolts (M12)	70	50



MAINTENANCE SCHEDULE

- A. BEFORE ENTERING SERVICE**
Check all fastener torques according to the torque table in this notice.
- B. BEFORE THE FIRST 4000 KMS**
Check all fastener torques according to the torque table in this notice.
- C. AT 50,000 KM INTERVALS**
Check all fastener torques and tighten where required according to the values in the table in this notice.



T.A.T.E.S (NZ) LIMITED
TRUCK & TRAILER EQUIPMENT & SPARES (NZ) LTD

For further service information contact Tates (NZ) Ltd
Ph: 0-9-299 7777 Fax: 0-9-297 7666

NOTES:

1. All bolt shanks must be lubricated with anti seize.
2. All torque recommendations are nut end torque.
3. Pivot torque nuts & shock absorber nuts must be torqued in suspension ride height position.

IMPORTANT

ArvinMeritor™



TRAILER AXLES

WHEEL NUT TORQUE

Wheel Fixing Type	Torque	
	Nm	lbf ft
Spoked Hub & Rim 3/4" UNC	275/350 Nm	200/260 lbf ft
BSF Steel Wheel 7/8" BSF	550/600 Nm	400/450 lbf ft
ISO Steel Wheel M22	700/750 Nm	500/550 lbf ft
ISO Alloy Wheel M22	650/700 Nm	475/500 lbf ft
Sleeved Nut Alloy Wheel M22	650/700 Nm	475/500 lbf ft

ISO or hub piloted wheel fixing relies on clamp force. Therefore wheel and hub mounting faces must be cleaned of paint, grease, dirt and highspots. Recheck nut torques within the first 50-100km on a new vehicle.



T.A.T.E.S (NZ) LIMITED
TRUCK & TRAILER EQUIPMENT & SPARES (NZ) LTD

For further service information contact Tates (NZ) Ltd
Ph: 0-9-299 7777 Fax: 0-9-297 7666

Wheel Nut Tightening Sequence

